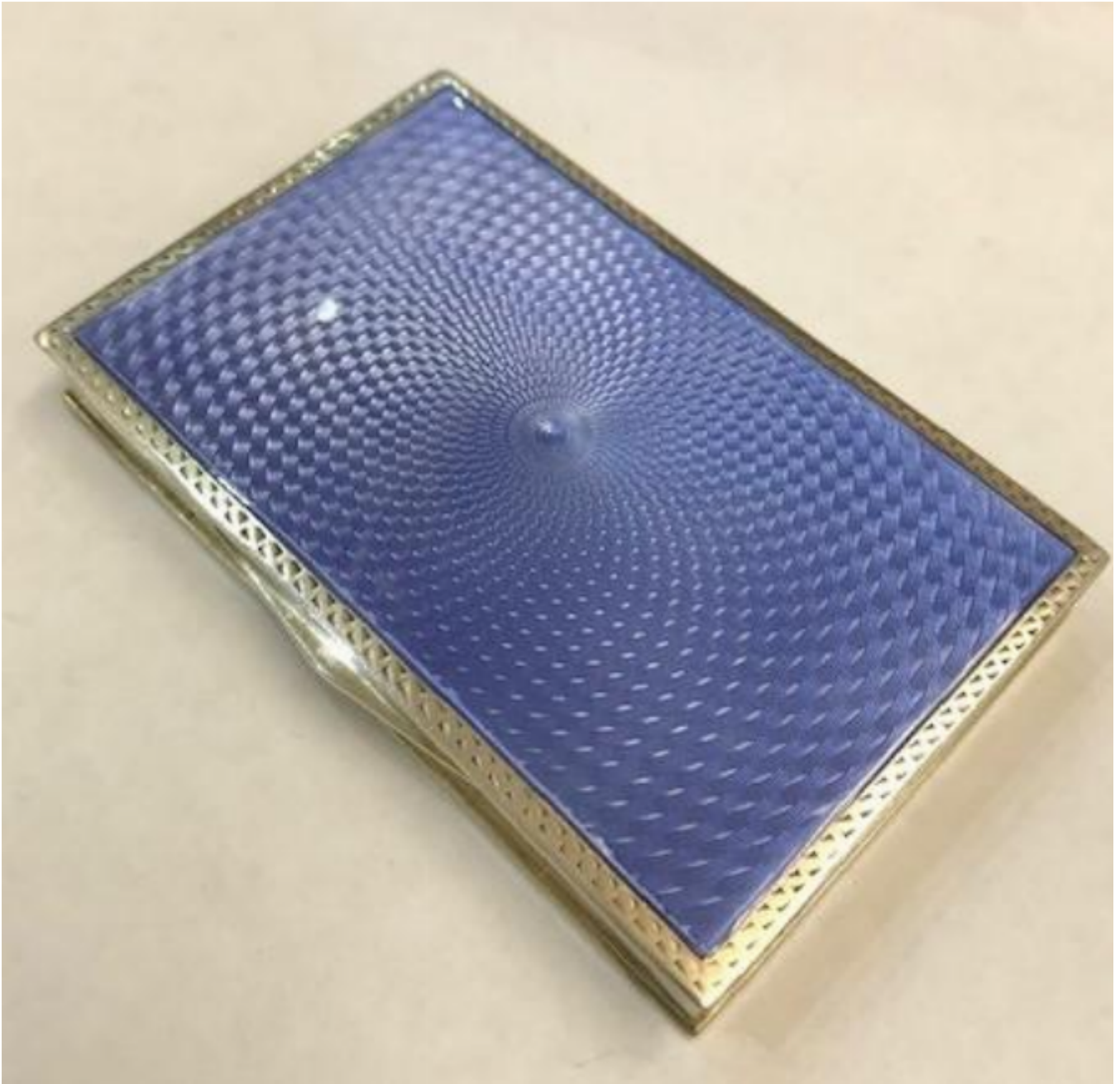


CONTINENTAL SILVER & ENAMEL BOX 1925 by HORTON & ALDAY

Sold



REF: N7728

Height: 8.5 cm (3.3")

Width: 6 cm (2.4")

Weight: 140 g

## Description

Continental Silver & Blue Enamel Box in the Faberge Quality. The Box is Enamelled Front & Back.

Made in Austria

Date: 1925(import mark) Birmingham

Maker: Horton & Alday.

Weight: 140g/ 4.51oz

Length: 8.5cm/ 3.02in

Width: 6cm /2.5in

The Box is in excellent condition

T/ETT